

destination Health

updates about our new RMH Hospital and Health Campus



Vol.3, No.2 February 2009

Getting in the Door

There will be six public entrances at the new hospital: the main entrance, Heart & Vascular Center, Ambulatory Surgery Center (ASC), Emergency Department, Cancer Center and the medical office building. There will be five additional non-public entrances positioned at the rear of the building and adjacent to employee and physician parking lots.

What will our new hospital entrances look like? Pictured are the main entrance, employee entrance, and those of the Heart & Vascular Center, ASC, Emergency Department and Mountain View Café. Look for more photos in coming editions!

PORT REPUBLIC ROAD



Mountain View Café entrance



Loading docks and employee entrance



Emergency Department entrance



Main entrance



ASC entrance



Heart and Vascular Center entrance

RESERVOIR STREET



Main Entrance

Would you like to receive this newsletter each month by e-mail? If so, contact us at destinationhealth@rhcc.com.



GOING GREEN

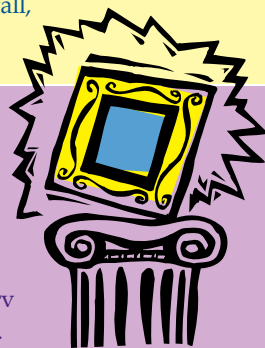
Recycling at 80 percent!

Bovis Lend Lease, the construction manager for the new hospital, has recycled 80 percent of construction waste on the project, according to Dennis Coffman, director, facilities planning and development. This effort will help RMH earn one or more points toward Leadership in Energy and Environmental Design (LEED) certification, he said. Concrete accounts for more than half of recycled material; others include wood, drywall, metal and cardboard.



Art Update

RMH is set to purchase its first new piece of art for the new hospital from the 2009 Juried Multimedia Art Exhibition at the Virginia Mennonite Retirement Community, said Merv Webb, co-chair of the art selection committee.



"We have entered into a purchase award agreement, which entitles us to purchase a piece of art prior to the show's opening," Webb said. "We were attracted to the show because it represents some of the finest artists in our region."

The sixth annual exhibition will take place May 31-July 5. Past years have drawn more than 70 artists nationwide and nearly 2,500 visitors, said Anne Finlayson, director, VMRC art exhibition. In 2008, a total of 600 works were submitted for consideration; 100 were chosen to be exhibited, she said.

Judges for 2009 are Yuriko Yamaguchi of Washington, D.C., Robert Stuart of Staunton and Margot Bergman of Timberville.

Webb said ESa, the architectural design firm for the new RMH hospital and health campus, is working with The Ambiance Group of Nashville, Tenn. to select artwork in harmony with the facility design. So far more than 80 local artists have submitted portfolios for consideration by The Ambiance Group, he said.

Shenandoah Valley artists may submit a portfolio or receive more information by contacting Ginny Parker of The Ambiance Group at ginnyp@ambianceart.com or 615-353-0723.

Project Update

- Lighting has been installed in many of the parking lot areas. The energy efficient light fixtures RMH selected are known as "down lights." Their shorter poles and focused light help to reduce light pollution—and keep the campus "green," said Dennis Coffman, director, facilities planning and development.
- Paving of parking lots is complete in all but the employee parking area. Workers are ready to begin installing sidewalks and drop-off entrances, Coffman said.
- Almost all glass has been installed; workers are now concentrating on painting "undercoats" and ceiling framework in the heated portion of the building (the southwest side). Interior work will move to the northeast side when the weather warms, Coffman said. Although this area is enclosed, it will need to be warm enough for paint and glue to dry. Working in phases in this way will save on heating costs, he said.
- New hospital planners are beginning to plan involving local civic groups in planting and landscaping at the new hospital. "There is a tremendous amount of local interest in this portion of the project," Coffman said. "We will try to involve as many groups as possible and practical."

Did You Know?

The RMH Web cam takes pictures of the construction site every 15 minutes. To view it, visit RMHOnline.com and click the link to "Our New Hospital and Health Campus." From there click on "construction webcam," and "click here to launch."

A full 24-hour photo archive is available for any date, going back to March 2007, when the live feed was installed.

Are you curious what the hospital looks like at night? Just select a time from the evening hours, and a recorded image from that time will pop up.

Or go back several months, or years, and see how much has changed—in just a matter of seconds! If you're feeling adventurous, click "Time Lapse," and watch the entire RMH construction project unfold, from beginning to present, in a mini-movie.



This image from the RMH Web cam was captured Feb. 11 at 6:42 a.m. To view a photo from any date or time after March 2007, simply use the sidebar available on the Web cam page.